

# REGULATORY FOCUS:

Regulatory Concerns  
Regarding Insurer Data Usage.

Tuesday, November 15<sup>th</sup>, 2022  
8:45 AM - 9:30 AM.



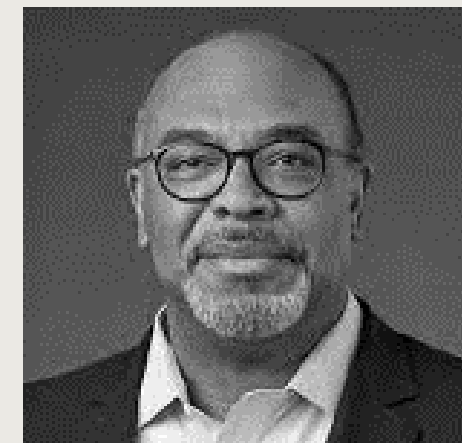
2022 CEFLI  
ANNUAL  
CONFERENCE



# FACULTY.



**Scott Kosnoff (Moderator)**  
Partner  
Faegre Drinker



**Andrew Mais**  
Commissioner  
State of Connecticut Insurance  
Department

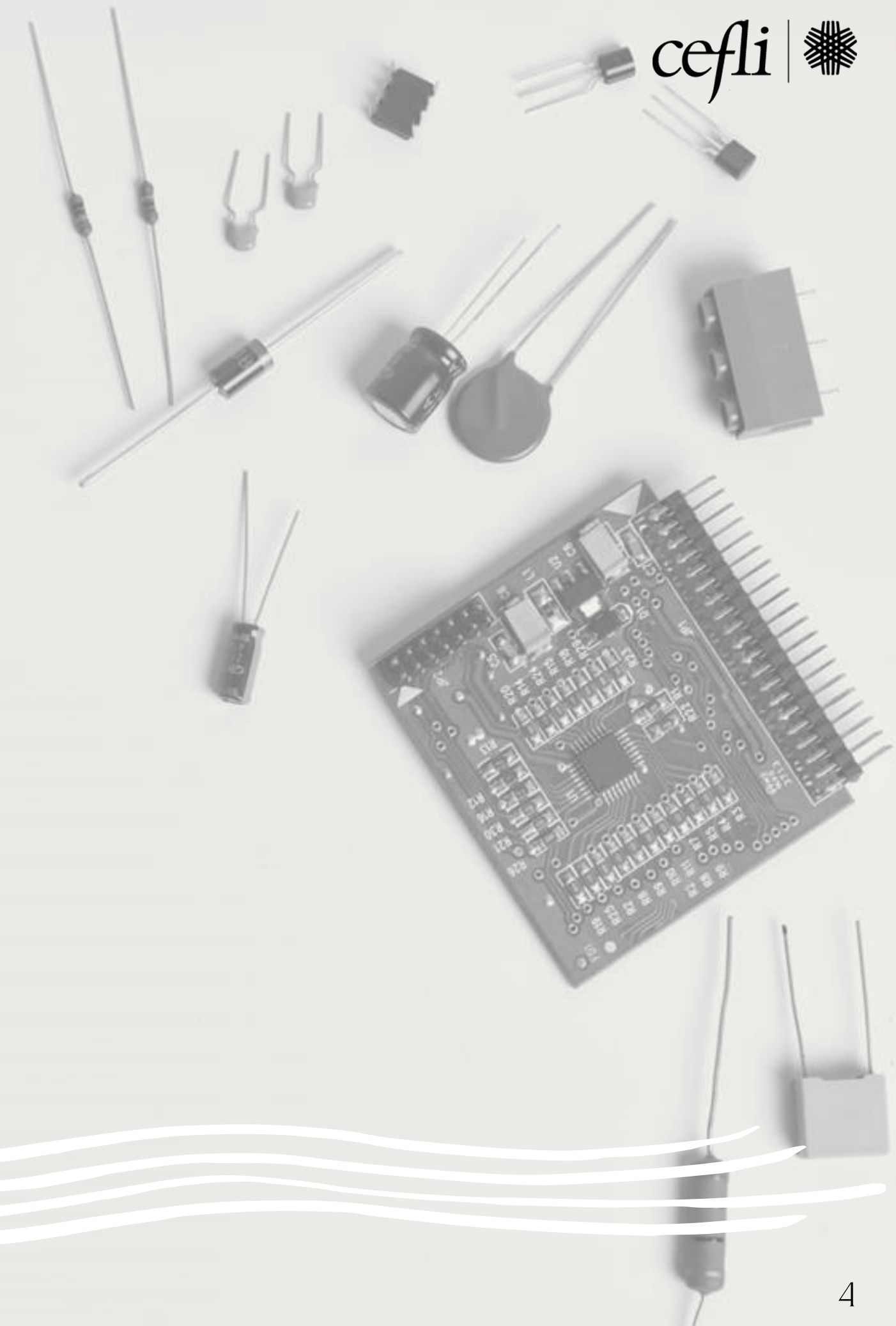


**Evan Daniels**  
Director  
Arizona Department of Insurance and  
Financial Institutions

# INVESTMENTS IN BIG DATA, ARTIFICIAL INTELLIGENCE AND ALGORITHMIC DECISION-MAKING.

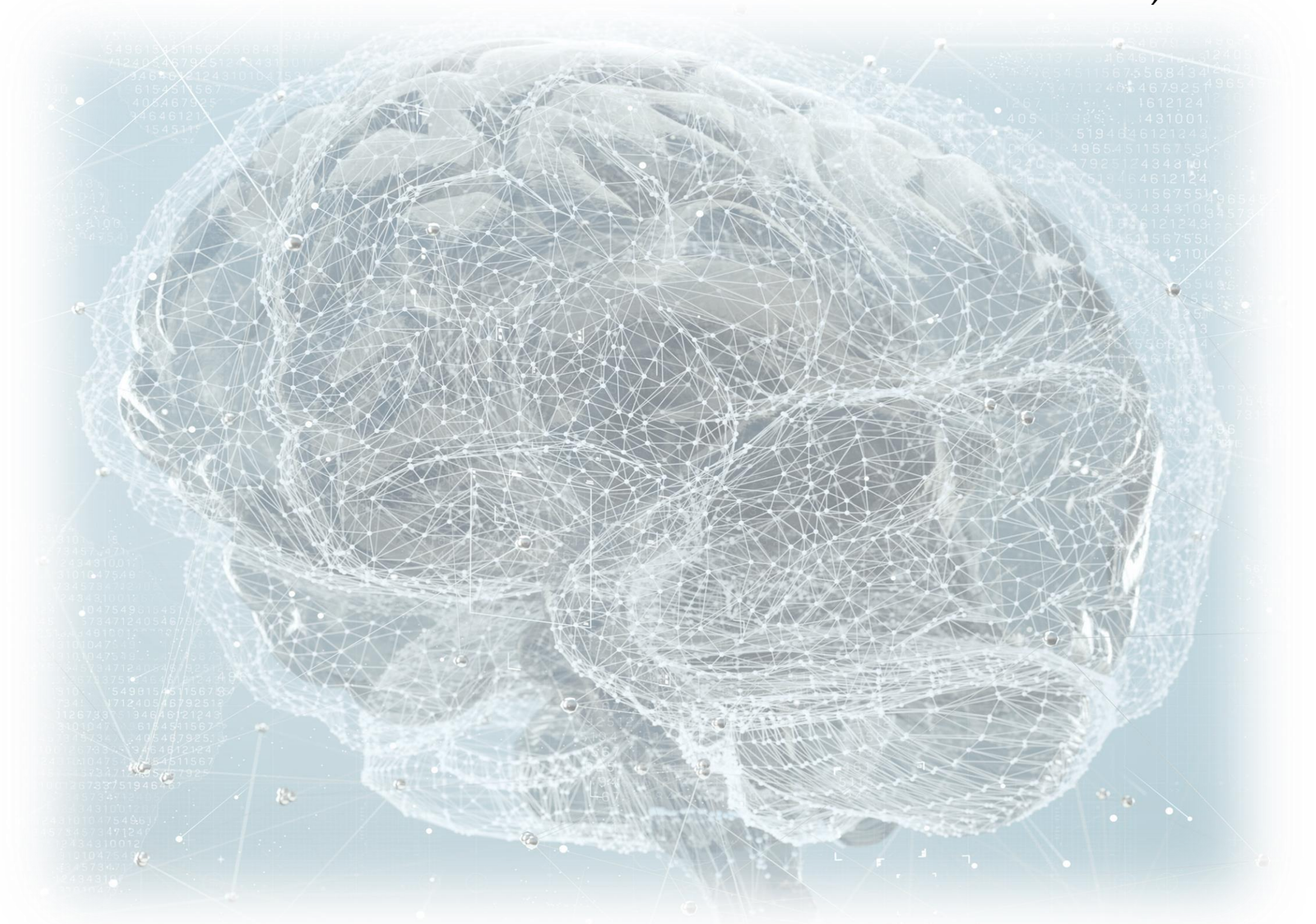


POTENTIAL CONCERNS  
ABOUT BIG DATA,  
ARTIFICIAL INTELLIGENCE  
AND ALGORITHMIC  
DECISION-MAKING.





STATE  
FOCUS ON  
BIG DATA,  
ARTIFICIAL  
INTELLIGENCE &  
ALGORITHMIC  
DECISION-MAKING.







POSSIBLE  
REGULATORY  
DEVELOPMENTS  
ON THE HORIZON.



# POTENTIAL REGULATORY, LITIGATION AND REPUTATIONAL RISK.





HAVING A  
“GOOD STORY  
TO TELL.”







FINAL THOUGHTS.



# QUESTIONS.

